



The Suit & Tuxedo

**RENTAL COLLECTION**

JFW

JIM'S FORMAL WEAR

STORE COPY  
2025

# Slim Fit Styles for **EVERY BODY**



Front & Back Cover  
Photos Courtesy of:  
@megcookfilmphoto



**Fashion-Forward & Comfortable  
for any shape or size**

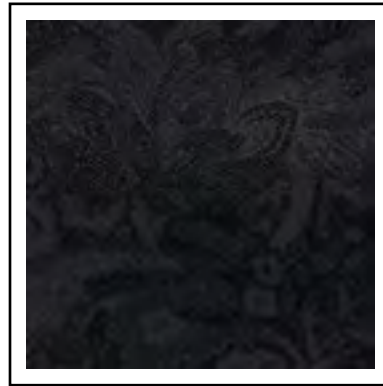
(up to size 74)

# COAT FABRIC SWATCHES

## FOR RENTAL

Choose your look from our collection of colored tuxedos & suits

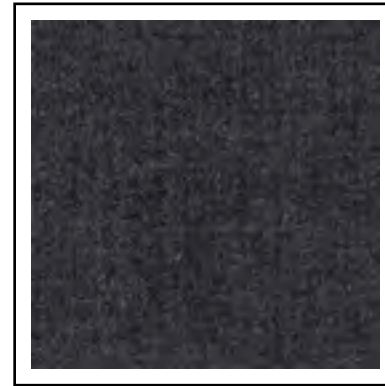
Reference page number for suit & tuxedo details



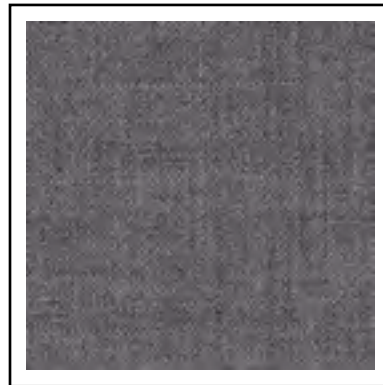
**Color:** Black Paisley  
**Style:** 182  
**Page:** 35



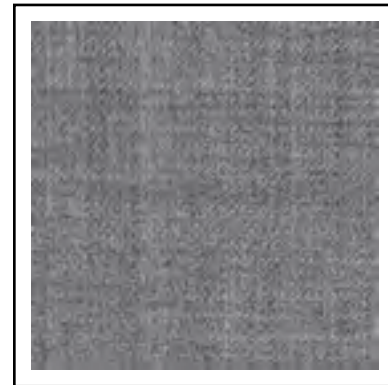
**Color:** Granite Paisley  
**Style:** 192  
**Page:** 34



**Color:** Steel Grey  
**Styles:** 391, 392  
**Page:** 24, 25



**Color:** Medium Grey  
**Style:** 350  
**Page:** 21



**Color:** Heather Grey  
**Style:** 262  
**Page:** 29



**Color:** White/Silver Paisley  
**Style:** 172  
**Page:** 38



**Color:** Hunter Green  
**Style:** 222  
**Page:** 31



**Color:** Burgundy  
**Style:** 201  
**Page:** 30



**Color:** Apple Red Paisley  
**Style:** 122  
**Page:** 36

# COAT FABRIC SWATCHES

## FOR RENTAL

Choose your look from our collection of colored tuxedos & suits

Reference page number for suit & tuxedo details



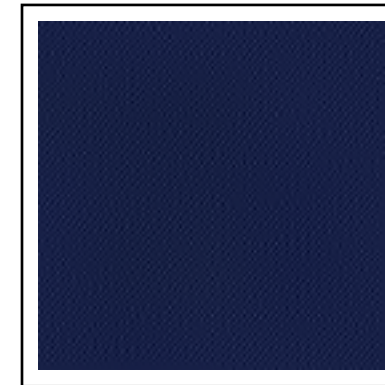
**Color:** Navy  
**Style:** 311  
**Page:** 18



**Color:** Navy  
**Styles:** 371, 372  
**Page:** 22, 23



**Color:** Blue  
**Style:** 302  
**Page:** 20



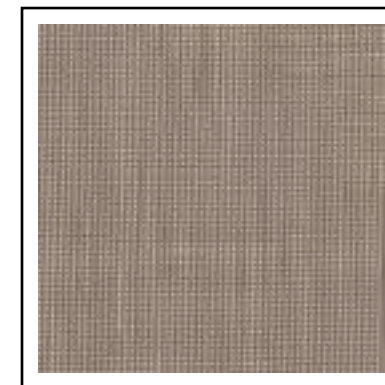
**Color:** Cobalt Blue  
**Style:** 211  
**Page:** 32



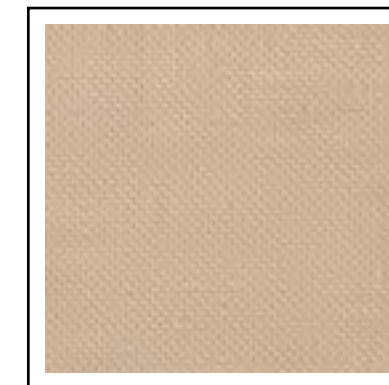
**Color:** Cobalt Paisley  
**Style:** 132  
**Page:** 37



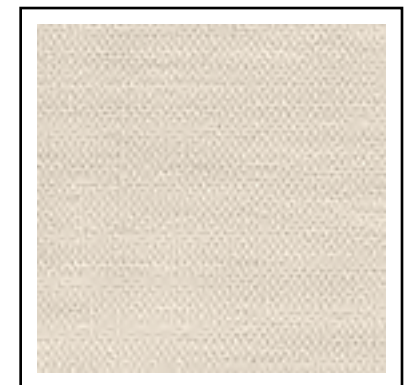
**Color:** Indigo Blue  
**Style:** 221  
**Page:** 33



**Color:** Sand  
**Style:** 202  
**Page:** 28



**Color:** Tan  
**Style:** 252  
**Page:** 39



**Color:** Tan  
**Style:** 272  
**Page:** 17



shown:  
**ALLURE MEN®**  
 Allure Men Heather Grey Clayton Suit - Style 262/N262



# RENT OR BUY

THE SAME DESIGNER STYLES SO  
 THE WHOLE PARTY MATCHES



## RENT OR BUY STYLES



**MICHAEL KORS**  
 Legacy Performance Stretch  
 Slim Fit Tuxedo

To Rent Style 921 see page 15  
 To Buy Style N921 see page 4 in  
 the JFW For Purchase Catalog



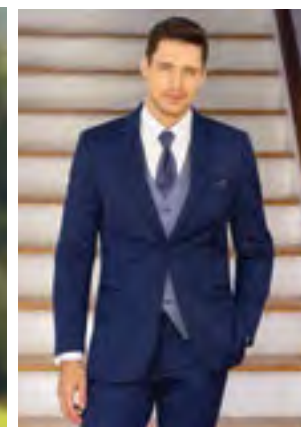
**MICHAEL KORS**  
 Black Performance Stretch  
 Slim Fit Wedding Suit

To Rent Style 421 see page 16  
 To Buy Style N421 see page 8 in  
 the JFW For Purchase Catalog



**MICHAEL KORS**  
 Tan Performance Stretch  
 Slim Fit Wedding Suit

To Rent Style 272 see page 17  
 To Buy Style N272 see page 5 in  
 the JFW For Purchase Catalog



**MICHAEL KORS**  
 Blue Performance Stretch  
 Slim Fit Wedding Suit

To Rent Style 302 see page 20  
 To Buy Style N302 see page 7 in  
 the JFW For Purchase Catalog



**MICHAEL KORS**  
 Medium Grey Performance Stretch  
 Slim Fit Wedding Suit

To Rent Style 350 see page 21  
 To Buy Style N350 see page 9  
 in the JFW For Purchase Catalog



**MICHAEL KORS**  
 Navy Sterling  
 Wedding Suit

To Rent Style 372 see page 23  
 To Buy Style N372 see page 6 in  
 the JFW For Purchase Catalog



**MICHAEL KORS**  
 Steel Grey Sterling  
 Wedding Suit

To Rent Style 392 see page 25  
 To Buy Style N392 see page 10 in  
 the JFW For Purchase Catalog



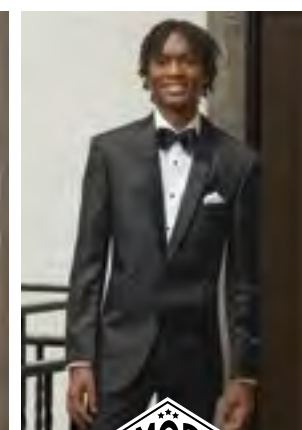
**ALLURE MEN**  
 Heather Grey Clayton  
 Slim Fit Suit

To Rent Style 262 see page 29  
 To Buy Style N262 see page 11 in  
 the JFW For Purchase Catalog



**MÖD**  
 Granite Aries Paisley  
 Slim Fit Tuxedo

To Rent Style 192 see page 34  
 To Buy Style N192 see page 33 in  
 the JFW For Purchase Catalog



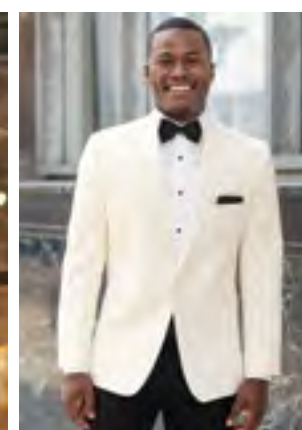
**MÖD**  
 Black Aries Paisley  
 Slim Fit Tuxedo

To Rent Style 182 see page 35  
 To Buy Style N182 see page 32 in  
 the JFW For Purchase Catalog



**MÖD**  
 White/Silver Aries Paisley  
 Slim Fit Tuxedo

To Rent Style 172 see page 38  
 To Buy Style N172 see page 31 in  
 the JFW For Purchase Catalog



**stephengeoffrey**  
 Ivory Classic Shawl  
 Wedding Tuxedo

To Rent Style 601 see page 45  
 To Buy Style N601C see page 30 in  
 the JFW For Purchase Catalog



**stephengeoffrey**  
 White Classic Shawl  
 Wedding Tuxedo

To Rent Style 701 see page 48  
 To Buy Style N701 see page 30 in  
 the JFW For Purchase Catalog

# MIX & MATCH FOR THE PERFECT LOOK!

# RENT OR BUY TO SUIT YOUR BUDGET!

RENT OR BUY



### Groom Look

To Buy Style N192:  
see page 33 in the  
JFW For Purchase Catalog

### Groomsmen Look

To Rent Style 421:  
see page 16



### Groom Look

To Buy Style N272C:  
see page 5 in the  
JFW For Purchase Catalog

### Groomsmen Look

To Rent Style 421:  
see page 16



RENT OR BUY



### Groom Look

To Buy Style NOBC:  
see page 19 in the  
JFW For Purchase Catalog

### Groomsmen Look

To Rent Style 302:  
see page 20



### Groom Look

To Buy Style NHSC:  
see page 15 in the  
JFW For Purchase Catalog

### Groomsmen Look

To Rent Style 350:  
see page 21



### Groom Look

To Buy Style N292C:  
see page 16 in the  
JFW For Purchase Catalog

### Groomsmen Look

To Rent Style 202:  
see page 28



### Groom Look

To Buy Style NHGC:  
see page 13 in the  
JFW For Purchase Catalog

### Groomsmen Look

To Rent Style 421:  
see page 16



RENT OR BUY



**921-Legacy Performance Stretch**  
Slim Fit Tuxedo  
by Michael Kors  
page 15



**421-Black Performance Stretch**  
Slim Fit Wedding Suit  
by Michael Kors  
page 16



**981-Force Performance Stretch**  
Slim Fit Tuxedo  
by Michael Kors  
page 19



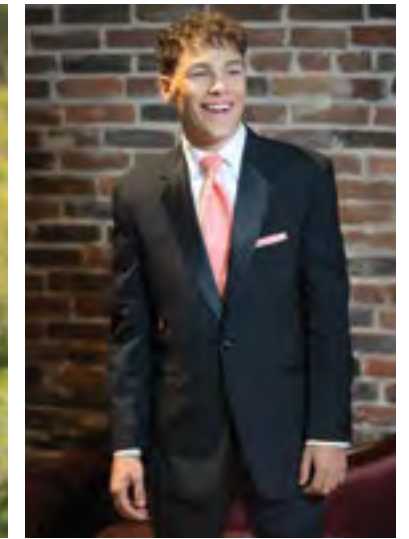
**991-Berkeley**  
Slim Fit Tuxedo  
by Michael Kors  
page 26



**852-Emerson**  
Modern Fit Tuxedo  
by Stephen Geoffrey  
page 40



**822-Cyprus**  
Modern Fit Tuxedo  
by Stephen Geoffrey  
page 41



**802-Black Troy**  
Modern Fit Tuxedo  
by Stephen Geoffrey  
page 42



**990-Berkeley**  
Modern Fit Tuxedo  
by Michael Kors  
page 27



**192-Granite Aries Paisley**  
Slim Fit Tuxedo  
by Mark of Distinction  
page 34



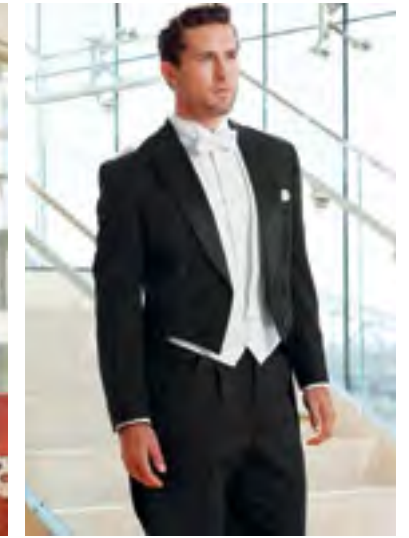
**182-Black Aries Paisley**  
Slim Fit Tuxedo  
by Mark of Distinction  
page 35



**820-Classic Notch**  
Traditional Fit Tuxedo  
-  
page 47



**880-Classic Peak**  
Traditional Fit Tuxedo  
-  
page 49

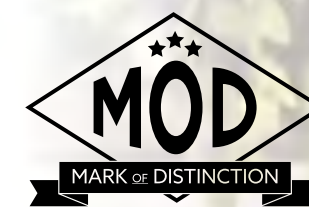


**588-Classic Peak Fulldress**  
Traditional Fit Tuxedo  
-  
page 50

**MICHAEL  
MICHAEL KORS**

**Legacy Slim Fit  
Performance Stretch Tuxedo**  
Style 921

Photo Courtesy of:  
Joleen Willis Photography  
joleenwillis.com



**Black Aries Paisley  
Slim Fit Tuxedo**  
Style 182



# GREY/GREEN STYLES



**350-Medium Grey Performance Stretch**  
Slim Fit Wedding Suit  
by Michael Kors  
page 21



**391-Steel Grey Sterling**  
Slim Fit Wedding Suit  
by Michael Kors  
page 24



**392-Steel Grey Sterling**  
Modern Fit Wedding Suit  
by Michael Kors  
page 25



**262-Heather Grey Clayton**  
Slim Fit Suit  
by Allure Men  
page 29



**222-Hunter Green Luka**  
Slim Fit Suit  
by Ike Behar  
page 31



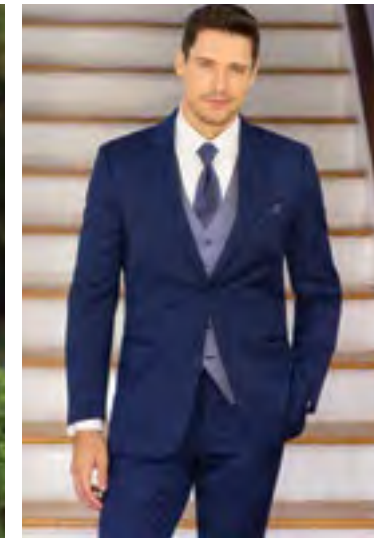
## ALLURE MEN

**Heather Grey Clayton**  
Slim Fit Suit  
Style 262

# BLUE/RED STYLES



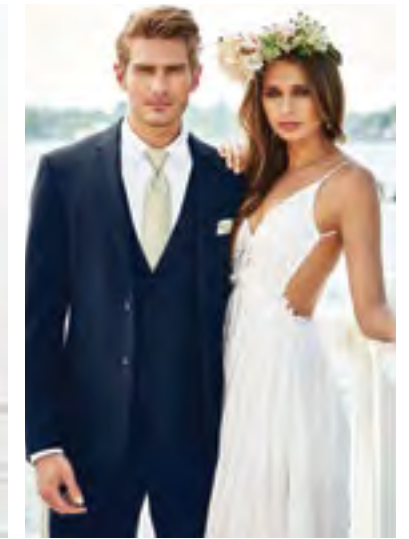
**311-Navy Performance Stretch**  
Slim Fit Tuxedo  
by Michael Kors  
page 18



**302-Blue Performance Stretch**  
Slim Fit Wedding Suit  
by Michael Kors  
page 20



**371-Navy Sterling**  
Slim Fit Wedding Suit  
by Michael Kors  
page 22



**372-Navy Sterling**  
Modern Fit Wedding Suit  
by Michael Kors  
page 23



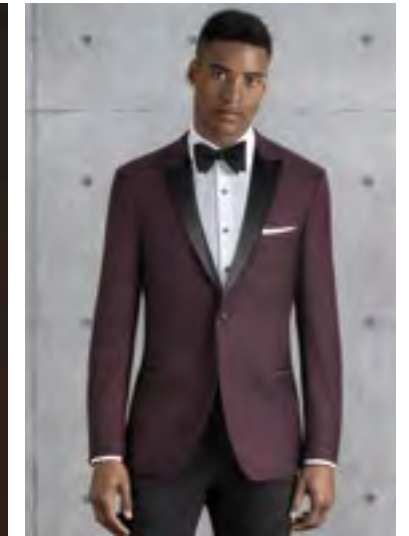
**211-Cobalt Blue Tribeca**  
Slim Fit Tuxedo  
by Ike Behar  
page 32



**221-Indigo Blue Lane**  
Slim Fit Tuxedo  
by Ike Behar  
page 33



**132-Cobalt Aries Paisley**  
Slim Fit Tuxedo  
by Mark of Distinction  
page 37



**201-Burgundy Empire**  
Slim Fit Tuxedo  
Kenneth Cole  
page 30



**122-Apple Red Aries Paisley**  
Slim Fit Tuxedo  
by Mark of Distinction  
page 36

## MICHAEL MICHAEL KORS

**Blue Performance Stretch**  
Slim Fit Wedding Suit  
Style 302





**272-Tan Performance Stretch**  
Slim Fit Wedding Suit  
by Michael Kors  
page 17



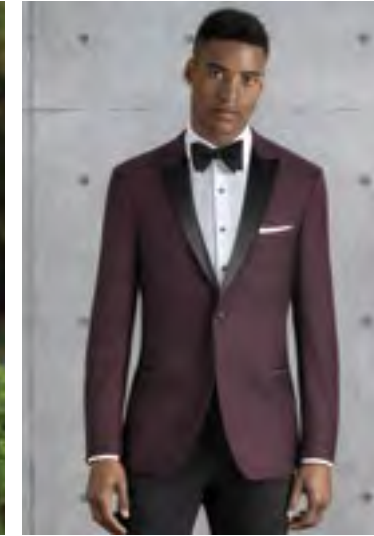
**202-Sand Brunswick**  
Slim Fit Suit  
by Allure Men  
page 28



**252-Tan Havana**  
Modern Fit Suit  
by Lord West  
page 39



**311-Navy Performance Stretch**  
Slim Fit Tuxedo  
by Michael Kors  
page 18



**201-Burgundy Empire**  
Slim Fit Tuxedo  
by Kenneth Cole  
page 30



**222-Hunter Green Luka**  
Slim Fit Suit  
by Ike Behar  
page 31



**211-Cobalt Blue Tribeca**  
Slim Fit Tuxedo  
by Ike Behar  
page 32



**172-White/Silver Aries Paisley**  
Slim Fit Tuxedo  
by Mark of Distinction  
page 38



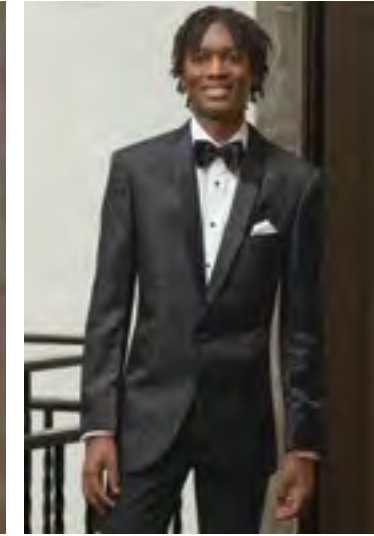
**712-White Troy**  
Modern Fit Tuxedo  
by Stephen Geoffrey  
page 43



**751-Waverly**  
Slim Fit Tuxedo  
by Ike Behar  
page 44



**192-Granite Aries Paisley**  
Slim Fit Tuxedo  
by Mark of Distinction  
page 34



**182-Black Aries Paisley**  
Slim Fit Tuxedo  
by Mark of Distinction  
page 35



**122-Apple Red Aries Paisley**  
Slim Fit Tuxedo  
by Mark of Distinction  
page 36



**701-White Classic Shawl**  
Modern Fit Tuxedo  
by Stephen Geoffrey  
page 48



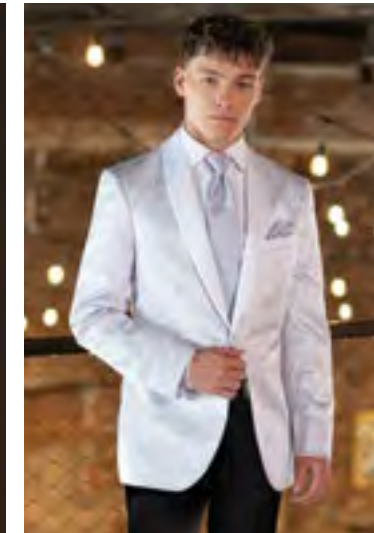
**601-Ivory Classic Shawl**  
Modern Fit Tuxedo  
by Stephen Geoffrey  
page 45



**602-Ivory Troy**  
Modern Fit Tuxedo  
by Stephen Geoffrey  
page 46



**132-Cobalt Aries Paisley**  
Slim Fit Tuxedo  
by Mark of Distinction  
page 37

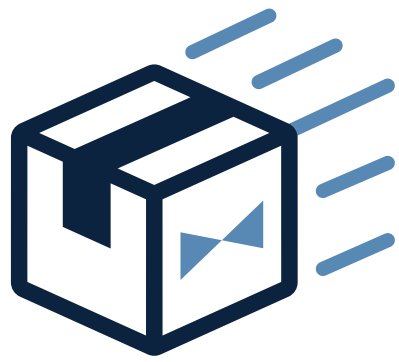


**172-White/Silver Aries Paisley**  
Slim Fit Tuxedo  
by Mark of Distinction  
page 38



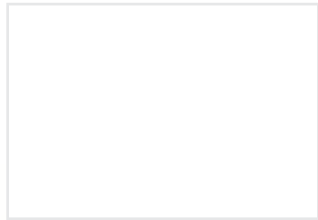
**751-Waverly**  
Slim Fit Tuxedo  
by Ike Behar  
page 44





# DIRECT DELIVERY

Home, Office, Destination...  
We'll Deliver There!



Direct Delivery Cost



RENT  
OR  
BUY

To BUY see page 4 in the  
JFW For Purchase Catalog



## MICHAEL KORS

### Legacy Performance Stretch Tuxedo

Style 921



**SLIM FIT**  
Contemporary styling  
with a slimming  
appearance.

**Size Scale:** A2 - see page 54

**Men's coat sizes:** 34-74

**Boys' coat sizes:** 3-18

**921 pant sizes:** 18-71

#### Features:

- ▶ Tailored to fit all body types
- ▶ CoolMax® performance stretch fabric
- ▶ Satin notch lapel, side-vented, 30<sup>1/2</sup>" length
- ▶ Shown with slim fit pants with belt loops and buttons to accommodate suspenders

#### Fabric Content:

CoolMax® / Sorona® / Wool

#### To order ensemble as shown:

Coat	<b>921</b>
Slim Fit Pants	<b>921</b>
Shirt (upcharge)	<b>96W</b>
Tie	<b>BSAT</b>
Fullback Vest	<b>F921</b>
Jewelry	<b>BLACK</b>
Formal Shoes (upcharge)	<b>BXS</b>
Pocket Square (purchase only)	<b>PWWH</b>

#### Black Pant Option:

Slim Fit Pants	<b>921</b>
----------------	------------

DIAMOND COLLECTION



# Ring Bearer SAVINGS

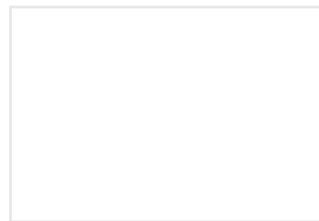
ALL STYLES are specially priced for your little guy.

#### To qualify for the Ring Bearer Special Price:

- ▶ The Ring Bearer must be accompanied by the groom's tuxedo or suit rental and five fully paid rentals in the wedding party.
- ▶ Ring Bearer's tuxedo or suit may not exceed size 16.

All Tuxedos and Suits are specially priced for the Ring Bearer at:

Any pant, basic shirt, tie and premium vest included; shoes and pocket squares are additional.



SCAN ME  
for additional images

# MICHAEL KORS

## Black Performance Stretch Wedding Suit

Style 421



**SLIM FIT**  
Contemporary styling with a slimming appearance.

**Size Scale:** A2 - see page 54

**Men's coat sizes:** 34-74

**Boys' coat sizes:** 3-18

**921 pant sizes:** 18-71

### Features:

- ▶ Tailored to fit all body types
- ▶ CoolMax® performance stretch fabric
- ▶ Self-framed notch lapel, side-vented, 29½" length
- ▶ Shown with slim fit pants with belt loops and buttons to accommodate suspenders

### Fabric Content:

CoolMax® / Sorona® / Wool

### To order ensemble as shown:

Coat	<b>421</b>
Slim Fit Pants	<b>921</b>
Shirt (upcharge)	<b>96W</b>
Tie	<b>WXRW</b>
Fullback Vest	<b>F921</b>
Jewelry	<b>BLACK</b>
Formal Shoes (upcharge)	<b>BXS</b>
Pocket Square (purchase only)	<b>PWRW</b>
Belt (purchase only)	<b>NBLT</b>

### Black Pant Option:

Slim Fit Pants	<b>921</b>
----------------	------------



**SCAN ME**  
for additional images



To BUY see page 8 in the JFW For Purchase Catalog



To BUY see page 5 in the JFW For Purchase Catalog



# MICHAEL KORS

## Tan Performance Stretch Wedding Suit

Style 272



**SLIM FIT**  
Contemporary styling with a slimming appearance.

**Size Scale:** A2 - see page 54

**Men's coat sizes:** 34-74

**Boys' coat sizes:** 3-18

**272 pant sizes:** 18-71

### Features:

- ▶ Tailored to fit all body types
- ▶ CoolMax® performance stretch fabric
- ▶ Self-framed notch lapel, side-vented, 29½" length
- ▶ Shown with slim fit pants with belt loops and buttons to accommodate suspenders

### Fabric Content:

CoolMax® / Sorona® / Wool

### To order ensemble as shown:

Coat	<b>272</b>
Slim Fit Pants	<b>272</b>
Shirt (upcharge)	<b>96W</b>
Tie	<b>WFRS</b>
Fullback Vest	<b>F272</b>
Jewelry	<b>BLACK</b>
Formal Shoes (purchase only)	<b>NCSW</b>
Pocket Square (purchase only)	<b>PFRS</b>
Belt (purchase only)	<b>NBLT</b>

### Tan Pant Option:

Slim Fit Pants	<b>272</b>
----------------	------------



**SCAN ME**  
for additional images

# MICHAEL KORS

## Navy Performance Stretch Tuxedo

Style 311



**SLIM FIT**  
Contemporary styling with a slimming appearance.

**Size Scale:** A2 - see page 54

**Men's coat sizes:** 34-74

**Boys' coat sizes:** 3-18

**311 pant sizes:** 18-71

### Features:

- ▶ Tailored to fit all body types
- ▶ CoolMax® performance stretch fabric
- ▶ Black satin peak lapel, side-vented, 29 1/2" length
- ▶ Black satin double besom pockets and button
- ▶ Shown with slim fit pants with belt loops and buttons to accommodate suspenders

### Fabric Content:

CoolMax® / Sorona® / Wool

### To order ensemble as shown:

Coat	<b>311</b>
Slim Fit Pants	<b>311</b>
Shirt (upcharge)	<b>96W</b>
Tie	<b>BTDS</b>
Fullback Vest	<b>F311</b>
Jewelry	<b>BLACK</b>
Formal Shoes (purchase only)	<b>NBNL</b>
Pocket Square (purchase only)	<b>PWWH</b>
Belt (purchase only)	<b>NILB</b>

### Navy Pant Option:

Slim Fit Pants **311**

### Black Pant Option:

Slim Fit Pants **921**



**SCAN ME**  
for additional images



# MICHAEL KORS

## Force Performance Stretch Tuxedo

Style 981



**SLIM FIT**  
Contemporary styling with a slimming appearance.

**Size Scale:** B - see page 54

**Men's coat sizes:** 34-66

**Boys' coat sizes:** 3-18

**921 pant sizes:** 18-71

### Features:

- ▶ Tailored to fit all body types
- ▶ CoolMax® performance stretch fabric
- ▶ Grosgrain notch lapel, side-vented, 29 1/2" length
- ▶ Grosgrain trimmed pockets and covered buttons
- ▶ Shown with slim fit pants with belt loops and buttons to accommodate suspenders

### Fabric Content:

CoolMax® / Sorona® / Wool

### To order ensemble as shown:

Coat	<b>981</b>
Slim Fit Pants	<b>921</b>
Shirt (purchase only)	<b>91W</b>
Tie	<b>B981</b>
Fullback Vest	<b>F921</b>
Jewelry	<b>BLACK</b>
Formal Shoes (purchase only)	<b>NBNL</b>
Pocket Square (purchase only)	<b>PWWH</b>
Belt (purchase only)	<b>NILB</b>

### Black Pant Option:

Slim Fit Pants **921**



**SCAN ME**  
for additional images

DIAMOND COLLECTION

DIAMOND COLLECTION

# MICHAEL KORS

## Blue Performance Stretch Wedding Suit

Style 302



**SLIM FIT**  
Contemporary styling with a slimming appearance.

**Size Scale:** A2 - see page 54

**Men's coat sizes:** 34-74

**Boys' coat sizes:** 3-18

**302 pant sizes:** 18-71

### Features:

- ▶ Tailored to fit all body types
- ▶ CoolMax® performance stretch fabric
- ▶ Self-framed notch lapel, side-vented, 30½" length
- ▶ Shown with slim fit pants with belt loops and buttons to accommodate suspenders

### Fabric Content:

CoolMax® / Sorona® / Wool

### To order ensemble as shown:

Coat	<b>302</b>
Slim Fit Pants	<b>302</b>
Shirt (upcharge)	<b>96W</b>
Tie	<b>WNMB</b>
Fullback Vest	<b>FNMB</b>
Jewelry	<b>BLACK</b>
Formal Shoes (upcharge)	<b>COP</b>
Pocket Square (purchase only)	<b>PNMB</b>
Belt (purchase only)	<b>NBLT</b>

### Blue Pant Option:

Slim Fit Pants	<b>302</b>
----------------	------------



**SCAN ME**  
for additional images



To BUY see page 7 in the JFW For Purchase Catalog



To BUY see page 9 in the JFW For Purchase Catalog



# MICHAEL KORS

## Medium Grey Performance Stretch Wedding Suit

Style 350



**SLIM FIT**  
Contemporary styling with a slimming appearance.

**Size Scale:** A2 - see page 54

**Men's coat sizes:** 34-74

**Boys' coat sizes:** 3-18

**350 pant sizes:** 18-71

### Features:

- ▶ Tailored to fit all body types
- ▶ CoolMax® performance stretch fabric
- ▶ Self-framed notch lapel, side-vented, 29½" length
- ▶ Shown with slim fit pants with belt loops and buttons to accommodate suspenders

### Fabric Content:

CoolMax® / Sorona® / Wool

### To order ensemble as shown:

Coat	<b>350</b>
Slim Fit Pants	<b>350</b>
Shirt (upcharge)	<b>96W</b>
Tie	<b>BNST</b>
Fullback Vest	<b>FNST</b>
Jewelry	<b>BLACK</b>
Formal Shoes (upcharge)	<b>COP</b>
Pocket Square (purchase only)	<b>PNST</b>
Belt (purchase only)	<b>NBLT</b>

### Grey Pant Option:

Slim Fit Pants	<b>350</b>
----------------	------------



**SCAN ME**  
for additional images

# MICHAEL KORS

## Navy Sterling Wedding Suit

Style 371



**SLIM FIT**  
Contemporary styling with a slimming appearance.

**Size Scale:** E - see page 54

**Men's coat sizes:** 34-44

**Boys' coat sizes:** N/A

**371 pant sizes:** 27-44

### Features:

- ▶ Self-framed notch lapel, side-vented, 30<sup>1</sup>/<sub>2</sub>" length
- ▶ Shown with slim fit pants with belt loops and buttons to accommodate suspenders

### Fabric Content:

Venetian Super 130's Wool

### Companion Coat:

Style 372 - Navy Sterling Modern Fit Wedding Suit; see page 23

### To order ensemble as shown:

Coat	<b>371</b>
Slim Fit Pants	<b>371</b>
Shirt (upcharge)	<b>96W</b>
Tie	<b>BNNA</b>
Fullback Vest	<b>F372</b>
Jewelry	<b>BLACK</b>
Formal Shoes (upcharge)	<b>CXS</b>
Pocket Square (purchase only)	<b>PWWH</b>
Belt (purchase only)	<b>NBLT</b>

### Navy Pant Options:

Slim Fit Pants	<b>371</b>
Modern Fit Pants	<b>372</b>



**SCAN ME**  
for additional images

AVAILABLE IN  
TWO FITS:

**SLIM FIT**  
Shown

**MODERN FIT**  
See page 23



To BUY see page 6 in the JFW For Purchase Catalog



# MICHAEL KORS

## Navy Sterling Wedding Suit

Style 372



**MODERN FIT**  
Fashion-forward styling with a flattering appearance.

**Size Scale:** B - see page 54

**Men's coat sizes:** 34-66

**Boys' coat sizes:** 3-18

**372 pant sizes:** 18-65

### Features:

- ▶ Self-framed notch lapel, side-vented, 30<sup>1</sup>/<sub>2</sub>" length
- ▶ Shown with modern fit pants with belt loops and buttons to accommodate suspenders

### Fabric Content:

Venetian Super 130's Wool

### Companion Coat:

Style 371 - Navy Sterling Slim Fit Wedding Suit; see page 22

### To order ensemble as shown:

Coat	<b>372</b>
Modern Fit Pants	<b>372</b>
Shirt (upcharge)	<b>96W</b>
Tie	<b>WFSE</b>
Fullback Vest	<b>F372</b>
Jewelry	<b>BLACK</b>
Formal Shoes (upcharge)	<b>CXS</b>
Pocket Square (purchase only)	<b>PFSE</b>
Belt (purchase only)	<b>NBLT</b>

### Navy Pant Options:

Slim Fit Pants	<b>371</b>
Modern Fit Pants	<b>372</b>



**SCAN ME**  
for additional images

AVAILABLE IN  
TWO FITS:

**MODERN FIT**  
Shown

**SLIM FIT**  
See page 22

# MICHAEL KORS

## Steel Grey Sterling Wedding Suit

Style 391

**S** **SLIM FIT**  
Contemporary styling with a slimming appearance.

**Size Scale:** E - see page 54  
**Men's coat sizes:** 34-44  
**Boys' coat sizes:** N/A  
**391 pant sizes:** 27-44

**Features:**

- ▶ Self-framed notch lapel, side-vented, 30 1/2" length
- ▶ Shown with slim fit pants with belt loops and buttons to accommodate suspenders

**Fabric Content:**

Venetian Super 130's Wool

**Companion Coat:**

Style 392 - Steel Grey Sterling Modern Fit Wedding Suit; see page 25

**To order ensemble as shown:**

Coat	<b>391</b>
Slim Fit Pants	<b>391</b>
Shirt (upcharge)	<b>96W</b>
Tie	<b>WNWI</b>
Fullback Vest	<b>F392</b>
Jewelry	<b>BLACK</b>
Formal Shoes (upcharge)	<b>CXS</b>
Pocket Square (purchase only)	<b>PNWI</b>
Belt (purchase only)	<b>NBLT</b>

**Steel Grey Pant Options:**

Slim Fit Pants	<b>391</b>
Modern Fit Pants	<b>392</b>



**SCAN ME**  
for additional images

AVAILABLE IN  
TWO FITS:

**SLIM FIT**  
Shown

**MODERN FIT**  
See page 25



To BUY see page 10 in the JFW For Purchase Catalog

# MICHAEL KORS

## Steel Grey Sterling Wedding Suit

Style 392

**M** **MODERN FIT**  
Fashion-forward styling with a flattering appearance.

**Size Scale:** B - see page 54  
**Men's coat sizes:** 34-66  
**Boys' coat sizes:** 3-18  
**392 pant sizes:** 18-65

**Features:**

- ▶ Self-framed notch lapel, side-vented, 30 1/2" length
- ▶ Shown with modern fit pants with belt loops and buttons to accommodate suspenders

**Fabric Content:**

Venetian Super 130's Wool

**Companion Coat:**

Style 391 - Steel Grey Sterling Slim Fit Wedding Suit; see page 24

**To order ensemble as shown:**

Coat	<b>392</b>
Modern Fit Pants	<b>392</b>
Shirt (upcharge)	<b>96W</b>
Tie	<b>BNST</b>
Fullback Vest	<b>F392</b>
Jewelry	<b>BLACK</b>
Formal Shoes (upcharge)	<b>COP</b>
Pocket Square (purchase only)	<b>PNST</b>
Belt (purchase only)	<b>NBLT</b>

**Steel Grey Pant Options:**

Slim Fit Pants	<b>391</b>
Modern Fit Pants	<b>392</b>



**SCAN ME**  
for additional images

AVAILABLE IN  
TWO FITS:

**MODERN FIT**  
Shown

**SLIM FIT**  
See page 24

DIAMOND COLLECTION

DIAMOND COLLECTION

# MICHAEL KORS

## Berkeley Tuxedo Style 991



**SLIM FIT**  
Contemporary styling  
with a slimming  
appearance.

**Size Scale:** E - see page 54  
**Men's coat sizes:** 34-44  
**Boys' coat sizes:** N/A  
**991 pant sizes:** 18-59

### Features:

- ▶ Grosgrain notch lapel, side-vented, 30<sup>1</sup>/<sub>2</sub>" length
- ▶ Grosgrain trimmed pockets
- ▶ Shown with slim fit pants with no stripe

### Fabric Content:

Venetian Super 130's Wool

### Companion Coat:

Style 990 - Berkeley Modern Fit Tuxedo;  
see page 27

### To order ensemble as shown:

Coat	<b>991</b>
Slim Fit Pants	<b>991</b>
Shirt (upcharge)	<b>96W</b>
Tie	<b>BXBL</b>
Fullback Vest	<b>F900</b>
Jewelry	<b>BLACK</b>
Formal Shoes (upcharge)	<b>BDS</b>
Pocket Square (purchase only)	<b>PWWH</b>

### Black Pant Options:

Slim Fit Pants	<b>991</b>
Modern Fit Pants	<b>990</b>



**SCAN ME**  
for additional images



AVAILABLE IN  
TWO FITS:

**SLIM FIT**  
Shown

**MODERN FIT**  
See page 27

# MICHAEL KORS

## Berkeley Tuxedo Style 990



**MODERN FIT**  
Fashion-forward  
styling with a flattering  
appearance.

**Size Scale:** B - see page 54  
**Men's coat sizes:** 34-66  
**Boys' coat sizes:** 3-18  
**990 pant sizes:** 18-65

### Features:

- ▶ Grosgrain notch lapel, side-vented, 30<sup>1</sup>/<sub>2</sub>" length
- ▶ Grosgrain trimmed pockets
- ▶ Shown with modern fit pants with grosgrain piping on the leg

### Fabric Content:

Venetian Super 130's Wool

### Companion Coat:

Style 991 - Berkeley Slim Fit Tuxedo;  
see page 26

### To order ensemble as shown:

Coat	<b>990</b>
Modern Fit Pants	<b>990</b>
Shirt (upcharge)	<b>96W</b>
Tie	<b>BXBL</b>
Fullback Vest	<b>F900</b>
Jewelry	<b>BLACK</b>
Formal Shoes (upcharge)	<b>BDS</b>
Pocket Square (purchase only)	<b>PWWH</b>

### Black Pant Options:

Slim Fit Pants	<b>991</b>
Modern Fit Pants	<b>990</b>



**SCAN ME**  
for additional images

AVAILABLE IN  
TWO FITS:

**MODERN FIT**  
Shown

**SLIM FIT**  
See page 26

DIAMOND COLLECTION

DIAMOND COLLECTION

# ALLURE MEN

## Sand Brunswick Suit

Style 202

**S** **SLIM FIT**  
Contemporary styling with a slimming appearance.

**Size Scale:** B - see page 54

**Men's coat sizes:** 34-66

**Boys' coat sizes:** 3-18

**202 pant sizes:** 18-65

### Features:

- ▶ Tailored to fit all body types
- ▶ Self-framed notch lapel, side-vented, 30" length
- ▶ Shown with slim fit pants with belt loops and buttons to accommodate suspenders

### Fabric Content:

60/40 Super 130's Wool Blend

### To order ensemble as shown:

Coat	<b>202</b>
Slim Fit Pants	<b>202</b>
Shirt (upcharge)	<b>96W</b>
Tie	<b>WFWI</b>
Fullback Vest	<b>F202</b>
Jewelry	<b>BLACK</b>
Formal Shoes (upcharge)	<b>COP</b>
Pocket Square (purchase only)	<b>PFWI</b>
Belt (purchase only)	<b>NBLT</b>

### Sand Pant Option:

Slim Fit Pants	<b>202</b>
----------------	------------



**SCAN ME**  
for additional images



To BUY see page 11 in the JFW For Purchase Catalog

# ALLURE MEN

## Heather Grey Clayton Suit

Style 262

**S** **SLIM FIT**  
Contemporary styling with a slimming appearance.

**Size Scale:** A2 - see page 54

**Men's coat sizes:** 34-74

**Boys' coat sizes:** 3-18

**262 pant sizes:** 18-71

### Features:

- ▶ Tailored to fit all body types
- ▶ Self-framed notch lapel, side-vented, 29 7/8" length
- ▶ Shown with slim fit pants with belt loops and buttons to accommodate suspenders

### Fabric Content:

Super 130's Wool

### To order ensemble as shown:

Coat	<b>262</b>
Slim Fit Pants	<b>262</b>
Shirt (upcharge)	<b>96W</b>
Tie	<b>BXNA</b>
Fullback Vest	<b>F262</b>
Jewelry	<b>BLACK</b>
Formal Shoes (upcharge)	<b>CXS</b>
Pocket Square (purchase only)	<b>PWNA</b>
Belt (purchase only)	<b>NBLT</b>

### Heather Grey Pant Option:

Slim Fit Pants	<b>262</b>
----------------	------------



**SCAN ME**  
for additional images





# KENNETH COLE

## Burgundy Empire Tuxedo

Style 201



**SLIM FIT**  
Contemporary styling with a slimming appearance.

**Size Scale:** D - see page 54

**Men's coat sizes:** 34-60

**Boys' coat sizes:** 3-18

**991 pant sizes:** 18-59

### Features:

- ▶ Tailored to fit all body types
- ▶ Black satin peak lapel, side-vented, 30<sup>1/2</sup>" length
- ▶ Black satin double besom pockets
- ▶ Shown with black slim fit pants with no stripe

### Fabric Content:

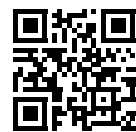
Super 120's Wool

### To order ensemble as shown:

Coat	201
Slim Fit Pants	991
Shirt (upcharge)	96W
Tie	BSAT
Jewelry	BLACK
Formal Shoes (upcharge)	BDS
Pocket Square (purchase only)	PWWH

### Black Pant Options:

Slim Fit Pants	991
Modern Fit Pants	990



SCAN ME  
for additional images



IK EVENING  
BY KE BEHAR

## Hunter Green Luka Suit

Style 222



**SLIM FIT**  
Contemporary styling with a slimming appearance.

**Size Scale:** A2 - see page 54

**Men's coat sizes:** 34-74

**Boys' coat sizes:** 3-18

**222 pant sizes:** 18-71

### Features:

- ▶ Tailored to fit all body types
- ▶ Pick-stitched, self notch lapel, side-vented, flap pockets, 29<sup>3/4</sup>" length
- ▶ Shown with slim fit pants with belt loops

### Fabric Content:

100% Wool

### To order ensemble as shown:

Coat	222
Slim Fit Pants	222
Shirt (upcharge)	96W
Tie	WLDC
Fullback Vest	F222
Jewelry	BLACK
Formal Shoes (upcharge)	COP
Pocket Square (purchase only)	PLDC
Belt (purchase only)	NILT

### Hunter Green Pant Option:

Slim Fit Pants	222
----------------	-----



SCAN ME  
for additional images



DIAMOND COLLECTION

DIAMOND COLLECTION

**Cobalt Blue  
Tribeca Tuxedo**  
Style 211

**S** **SLIM FIT**  
Contemporary styling  
with a slimming  
appearance.

**Size Scale:** D - see page 54  
**Men's coat sizes:** 34-60  
**Boys' coat sizes:** 3-18  
**211 pant sizes:** 18-59

**Features:**

- ▶ Tailored to fit all body types
- ▶ Black satin peak lapel, side-vented, 30" length
- ▶ Black satin double besom pockets
- ▶ Shown with slim fit pants with no stripe

**Fabric Content:**

Super 120's Wool

**To order ensemble as shown:**

Coat	<b>211</b>
Slim Fit Pants	<b>211</b>
Shirt (upcharge)	<b>96W</b>
Tie	<b>BXBL</b>
Fullback Vest	<b>EXBL</b>
Jewelry	<b>BLACK</b>
Formal Shoes (upcharge)	<b>BDS</b>
Pocket Square (purchase only)	<b>PWWH</b>

**Cobalt Blue Pant Option:**

Slim Fit Pants	<b>211</b>
----------------	------------

**Black Pant Options:**

Slim Fit Pants	<b>991</b>
Modern Fit Pants	<b>990</b>



**SCAN ME**  
for additional images



**Indigo Blue  
Lane Tuxedo**  
Style 221

**S** **SLIM FIT**  
Contemporary styling  
with a slimming  
appearance.

**Size Scale:** B - see page 54  
**Men's coat sizes:** 34-66  
**Boys' coat sizes:** 3-18  
**221 pant sizes:** 18-65

**Features:**

- ▶ Tailored to fit all body types
- ▶ Satin-edged peak lapel, side-vented, 29 1/4" length
- ▶ Shown with slim fit pants with no stripe

**Fabric Content:**

Super 120's Wool

**To order ensemble as shown:**

Coat	<b>221</b>
Slim Fit Pants	<b>221</b>
Shirt (upcharge)	<b>96W</b>
Tie	<b>BXCP</b>
Fullback Vest	<b>EXCP</b>
Jewelry	<b>BLACK</b>
Formal Shoes (upcharge)	<b>CXS</b>
Pocket Square (purchase only)	<b>PWCP</b>

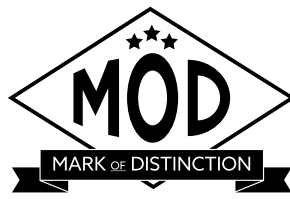
**Indigo Blue Pant Option:**

Slim Fit Pants	<b>221</b>
----------------	------------



**SCAN ME**  
for additional images





## Granite Aries Paisley Tuxedo

Style 192



**SLIM FIT**  
Contemporary styling with a slimming appearance.

**Size Scale:** G - see page 54

**Men's coat sizes:** 34-66 (even sizes only)

**Boys' coat sizes:** 3-18 (even sizes only)

**N11P pant sizes:** 26-44 (even sizes only)

### Features:

- ▶ Black satin shawl lapel, side-vented, 30<sup>1</sup>/<sub>2</sub>" length
- ▶ Fabric covered buttons
- ▶ Shown with Black Euro Slim Stretch Suit Pants for purchase

### Fabric Content:

100% Polyester

### To order ensemble as shown:

Coat	<b>192</b>
Euro Slim Pants (purchase only)	<b>N11P</b>
Shirt (upcharge)	<b>96W</b>
Tie	<b>BSAT</b>
Jewelry	<b>BLACK</b>
Formal Shoes (purchase only)	<b>NCSSS</b>
Pocket Square (purchase only)	<b>PWBL</b>

### Black Pant Options:

Euro Slim Pants (purchase only)	<b>N11P</b>
Slim Fit Pants	<b>921</b>
Modern Fit Pants	<b>990</b>



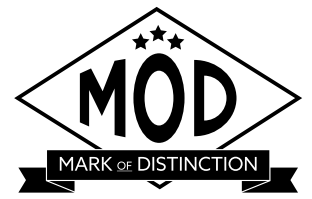
SCAN ME  
for additional images



To BUY see page 33 in the JFW For Purchase Catalog



To BUY see page 32 in the JFW For Purchase Catalog



## Black Aries Paisley Tuxedo

Style 182



**SLIM FIT**  
Contemporary styling with a slimming appearance.

**Size Scale:** G - see page 54

**Men's coat sizes:** 34-66 (even sizes only)

**Boys' coat sizes:** 3-18 (even sizes only)

**N11P pant sizes:** 26-44 (even sizes only)

### Features:

- ▶ Black satin shawl lapel, side-vented, 30<sup>1</sup>/<sub>2</sub>" length
- ▶ Fabric covered buttons
- ▶ Shown with Black Euro Slim Stretch Suit Pants for purchase

### Fabric Content:

100% Polyester

### To order ensemble as shown:

Coat	<b>182</b>
Euro Slim Pants (purchase only)	<b>N11P</b>
Shirt (upcharge)	<b>96W</b>
Tie	<b>BSAT</b>
Jewelry	<b>BLACK</b>
Formal Shoes (purchase only)	<b>NBSKS</b>
Pocket Square (purchase only)	<b>PWWH</b>

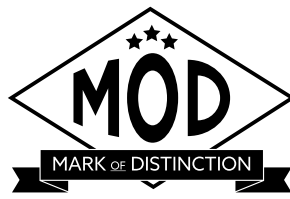
### Black Pant Options:

Euro Slim Pants (purchase only)	<b>N11P</b>
Slim Fit Pants	<b>921</b>
Modern Fit Pants	<b>990</b>



SCAN ME  
for additional images





## Apple Red Aries Paisley Tuxedo

Style 122



**SLIM FIT**  
Contemporary styling with a slimming appearance.

**Size Scale:** F - see page 54

**Men's coat sizes:** 34-50 (even sizes only)

**Boys' coat sizes:** 14-18 (even sizes only)

**N11P pant sizes:** 26-44 (even sizes only)

### Features:

- ▶ **Limited size scale**
- ▶ Black satin shawl lapel, side-vented, 30<sup>1</sup>/<sub>2</sub>" length
- ▶ Fabric covered buttons
- ▶ Shown with Black Euro Slim Stretch Suit Pants for purchase

### Fabric Content:

100% Polyester

### To order ensemble as shown:

Coat	<b>122</b>
Euro Slim Pants (purchase only)	<b>N11P</b>
Shirt (upcharge)	<b>96W</b>
Tie	<b>BSAT</b>
Jewelry	<b>BLACK</b>
Formal Shoes (purchase only)	<b>NCSSS</b>
Pocket Square (purchase only)	<b>PWBL</b>

### Black Pant Options:

Euro Slim Pants (purchase only)	<b>N11P</b>
Slim Fit Pants	<b>921</b>
Modern Fit Pants	<b>990</b>

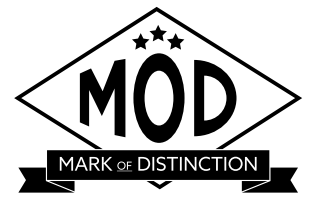


**SCAN ME**  
for additional images

LIMITED  
SIZE SCALE



LIMITED  
SIZE SCALE



## Cobalt Aries Paisley Tuxedo

Style 132



**SLIM FIT**  
Contemporary styling with a slimming appearance.

**Size Scale:** F - see page 54

**Men's coat sizes:** 34-50 (even sizes only)

**Boys' coat sizes:** 14-18 (even sizes only)

**N11P pant sizes:** 26-44 (even sizes only)

### Features:

- ▶ **Limited size scale**
- ▶ Black satin shawl lapel, side-vented, 30<sup>1</sup>/<sub>2</sub>" length
- ▶ Fabric covered buttons
- ▶ Shown with Black Euro Slim Stretch Suit Pants for purchase

### Fabric Content:

100% Polyester

### To order ensemble as shown:

Coat	<b>132</b>
Euro Slim Pants (purchase only)	<b>N11P</b>
Shirt (upcharge)	<b>96W</b>
Tie	<b>BSAT</b>
Jewelry	<b>BLACK</b>
Formal Shoes (purchase only)	<b>NBLVS</b>
Pocket Square (purchase only)	<b>PWBL</b>

### Black Pant Options:

Euro Slim Pants (purchase only)	<b>N11P</b>
Slim Fit Pants	<b>921</b>
Modern Fit Pants	<b>990</b>



**SCAN ME**  
for additional images

DIAMOND COLLECTION



## White/Silver Aries Paisley Tuxedo

Style 172

**S**

**SLIM FIT**  
Contemporary styling with a slimming appearance.

**Size Scale:** F - see page 54

**Men's coat sizes:** 34-50 (even sizes only)

**Boys' coat sizes:** 14-18 (even sizes only)

**N11P pant sizes:** 26-44 (even sizes only)

### Features:

- ▶ **Limited size scale**
- ▶ White satin shawl lapel, side-vented, 30 1/2" length
- ▶ Fabric covered buttons
- ▶ Shown with Black Euro Slim Stretch Suit Pants for purchase

### Fabric Content:

100% Polyester

### To order ensemble as shown:

Coat	172
Euro Slim Pants (purchase only)	N11P
Shirt (upcharge)	96W
Tie	WFPT
Jewelry	BLACK
Formal Shoes (purchase only)	NSSKS
Pocket Square (purchase only)	PFPT

### White Pant Options:

Euro Slim Pants (purchase only)	N17P
Modern Fit Pants	750

### Black Pant Options:

Euro Slim Pants (purchase only)	N11P
Slim Fit Pants	921
Modern Fit Pants	990



SCAN ME  
for additional images

RENT  
OR  
BUY

To BUY see page 31 in the  
JFW For Purchase Catalog

LIMITED  
SIZE SCALE



LORD WEST

## Tan Havana Suit

Style 252

**M**

**MODERN FIT**  
Fashion-forward styling with a flattering appearance.

**Size Scale:** B2 - see page 54

**Men's coat sizes:** 34-66

**Boys' coat sizes:** 3-18

**252 pant sizes:** 18-65

### Features:

- ▶ Self notch lapel, bone buttons, side-vented, 30" length
- ▶ Shown with modern fit pants with no stripe

### Fabric Content:

Ultra Fine Poly / Wool Blend

### To order ensemble as shown:

Coat	252
Modern Fit Pants	252
Shirt (upcharge)	96W
Tie	WRCP
Fullback Vest	F252
Jewelry	BLACK
Formal Shoes (upcharge)	CXS
Pocket Square (purchase only)	PKWH

### Tan Pant Options:

Slim Fit Pants	251
Modern Fit Pants	252

PLATINUM COLLECTION



stephengeoffrey

## Emerson Tuxedo Style 852



**MODERN FIT**  
Fashion-forward styling with a flattering appearance.

**Size Scale:** H - see page 54  
**Men's coat sizes:** 34-56  
**Boys' coat sizes:** 14-18  
**850 pant sizes:** 18-71

### Features:

- ▶ **Limited size scale**
- ▶ Grosgrain notch lapel, non-vented, 3 1/2" length
- ▶ Grosgrain buttons
- ▶ Shown with modern fit pants with a beaded stripe

### Fabric Content:

100% Tropical Worsted Wool

### To order ensemble as shown:

Coat	<b>852</b>
Modern Fit Pants	<b>850</b>
Shirt (upcharge)	<b>96W</b>
Tie	<b>WKLA</b>
Fullback Vest	<b>HRLA</b>
Jewelry	<b>BLACK</b>
Formal Shoes (upcharge)	<b>BDS</b>
Pocket Square (purchase only)	<b>PKLA</b>

### Black Pant Option:

Modern Fit Pants	<b>850</b>
------------------	------------



LIMITED SIZE SCALE



stephengeoffrey

## Cyprus Tuxedo Style 822



**MODERN FIT**  
Fashion-forward styling with a flattering appearance.

**Size Scale:** B2 - see page 54  
**Men's coat sizes:** 34-66  
**Boys' coat sizes:** 3-18  
**850 pant sizes:** 18-71

### Features:

- ▶ Satin shawl lapel, non-vented, 3 1/2" length
- ▶ Shown with modern fit pants with a beaded stripe

### Fabric Content:

100% Tropical Worsted Wool

### To order ensemble as shown:

Coat	<b>822</b>
Modern Slim Fit Pants	<b>850</b>
Shirt (upcharge)	<b>96W</b>
Tie	<b>WXRA</b>
Fullback Vest	<b>EXRA</b>
Jewelry	<b>BLACK</b>
Formal Shoes (upcharge)	<b>BDS</b>
Pocket Square (purchase only)	<b>PWRA</b>

### Black Pant Option:

Modern Fit Pants	<b>850</b>
------------------	------------



PLATINUM COLLECTION

PLATINUM COLLECTION



stephengeoffrey

## Black Troy Tuxedo

Style 802



**MODERN FIT**  
Fashion-forward styling with a flattering appearance.

**Size Scale:** H - see page 54

**Men's coat sizes:** 34-56

**Boys' coat sizes:** 14-18

**850 pant sizes:** 18-71

### Features:

- ▶ **Limited size scale**
- ▶ Satin notch lapel, non-vented, 31<sup>1</sup>/<sub>2</sub>" length
- ▶ Shown with modern fit pants with a beaded stripe

### Fabric Content:

100% Worsted Wool

### To order ensemble as shown:

Coat	<b>802</b>
Modern Fit Pants	<b>850</b>
Shirt (upcharge)	<b>96W</b>
Tie	<b>WRCO</b>
Fullback Vest	<b>HRCO</b>
Jewelry	<b>BLACK</b>
Formal Shoes (upcharge)	<b>BDS</b>
Pocket Square (purchase only)	<b>PKCO</b>

### Black Pant Option:

Modern Fit Pants	<b>850</b>
------------------	------------

LIMITED  
SIZE SCALE



stephengeoffrey

## White Troy Tuxedo

Style 712



**MODERN FIT**  
Fashion-forward styling with a flattering appearance.

**Size Scale:** B - see page 54

**Men's coat sizes:** 34-66

**Boys' coat sizes:** 3-18

**750 pant sizes:** 18-65

### Features:

- ▶ Satin notch lapel, non-vented, 31<sup>1</sup>/<sub>2</sub>" length
- ▶ Shown with modern fit pants with a beaded stripe

### Fabric Content:

100% Polyester

### To order ensemble as shown:

Coat	<b>712</b>
Modern Fit Pants	<b>750</b>
Shirt (upcharge)	<b>96W</b>
Tie	<b>BXWH</b>
Fullback Vest	<b>EXWH</b>
Jewelry	<b>PEARL</b>
Formal Shoes (upcharge)	<b>WAS</b>
Pocket Square (purchase only)	<b>PWWH</b>

### White Pant Option:

Modern Fit Pants	<b>750</b>
------------------	------------



PLATINUM COLLECTION

PLATINUM COLLECTION

Waverly Tuxedo  
Style 751



**SLIM FIT**  
Contemporary styling  
with a slimming  
appearance.

**Size Scale:** D - see page 54  
**Men's coat sizes:** 34-60  
**Boys' coat sizes:** 3-18  
**991 pant sizes:** 18-59

**Features:**

- ▶ Tailored to fit all body types
- ▶ Self shawl lapel edged in black satin, center-vented, 30" length
- ▶ Shown with black slim fit pants with no stripe

**Fabric Content:**  
100% Polyester

**To order ensemble as shown:**

Coat	<b>751</b>
Slim Fit Pants	<b>991</b>
Shirt (upcharge)	<b>96W</b>
Tie	<b>BXBL</b>
Fullback Vest	<b>EXBL</b>
Jewelry	<b>BLACK</b>
Formal Shoes (upcharge)	<b>BDS</b>
Pocket Square (purchase only)	<b>PWBL</b>

**White Pant Option:**

Modern Fit Pants **750**

**Black Pant Options:**

Slim Fit Pants **991**

Modern Fit Pants **850**



To BUY see page 30 in the  
JFW For Purchase Catalog



Ivory Classic  
Shawl Tuxedo  
Style 601



**MODERN FIT**  
Fashion-forward  
styling with a flattering  
appearance.

**Size Scale:** B - see page 54  
**Men's coat sizes:** 34-66  
**Boys' coat sizes:** 3-18  
**991 pant sizes:** 18-59

**Features:**

- ▶ Self shawl lapel, side-vented, 30 1/2" length
- ▶ Shown with black slim fit pants with no stripe

**Fabric Content:**  
100% Polyester

**To order ensemble as shown:**

Coat	<b>601</b>
Slim Fit Pants	<b>991</b>
Shirt (upcharge)	<b>96W</b>
Tie	<b>BSAT</b>
Sash	<b>CUMB</b>
Jewelry	<b>BLACK</b>
Formal Shoes (upcharge)	<b>BDS</b>
Pocket Square (purchase only)	<b>PWBL</b>

**Ivory Pant Option:**

Modern Fit Pants **650**

**Black Pant Options:**

Slim Fit Pants **991**

Modern Fit Pants **850**





stephengeoffrey

## Ivory Troy Tuxedo

Style 602



### MODERN FIT

Fashion-forward styling with a flattering appearance.

**Size Scale:** B2 - see page 54

**Men's coat sizes:** 34-66

**Boys' coat sizes:** 3-18

**650 pant sizes:** 18-65

### Features:

- ▶ Satin notch lapel, non-vented, 31½" length
- ▶ Shown with modern fit pants with a beaded stripe

### Fabric Content:

100% Polyester

### To order ensemble as shown:

Coat	<b>602</b>
Modern Fit Pants	<b>650</b>
Shirt (upcharge)	<b>96W</b>
Tie	<b>WRGO</b>
Fullback Vest	<b>HRGO</b>
Jewelry	<b>BLACK</b>
Formal Shoes (upcharge)	<b>COP</b>
Pocket Square (purchase only)	<b>PKGO</b>

### Ivory Pant Option:

Modern Fit Pants	<b>650</b>
------------------	------------



## Classic Notch Tuxedo

Style 820



### TRADITIONAL FIT

A classic, fuller cut tuxedo.

**Size Scale:** A - see page 54;

expanded sizes available

**Men's coat sizes:** 34-74

**Boys' coat sizes:** 2-18

**850 pant sizes:** 18-71

### Features:

- ▶ Satin notch lapel, non-vented, 31½" length
- ▶ Shown with modern fit pants with a beaded stripe

### Fabric Content:

100% Worsted Wool

### To order ensemble as shown:

Coat	<b>820</b>
Modern Fit Pants	<b>850</b>
Shirt	<b>85W</b>
Tie	<b>BSAT</b>
Sash	<b>CUMB</b>
Jewelry	<b>BLACK</b>
Formal Shoes (upcharge)	<b>BDS</b>
Pocket Square (purchase only)	<b>PSWH</b>

### Black Pant Option:

Modern Fit Pants	<b>850</b>
------------------	------------

## White Classic Shawl Tuxedo

Style 701



**MODERN FIT**  
Fashion-forward styling with a flattering appearance.

**Size Scale:** B2 - see page 54

**Men's coat sizes:** 34-66

**Boys' coat sizes:** 3-18

**850 pant sizes:** 18-71

**Features:**

- ▶ Self shawl lapel, flap pockets, non-vented, 30" length
- ▶ Shown with black modern fit pants with a beaded stripe

**Fabric Content:**

100% Polyester

**To order ensemble as shown:**

Coat	<b>701</b>
Modern Fit Pants	<b>850</b>
Shirt	<b>85W</b>
Tie	<b>BSAT</b>
Sash	<b>CUMB</b>
Jewelry	<b>BLACK</b>
Formal Shoes (upcharge)	<b>BDS</b>
Pocket Square (purchase only)	<b>PSBL</b>

**White Pant Option:**

Modern Fit Pants **750**

**Black Pant Option:**

Modern Fit Pants **850**



To BUY see page 30 in the JFW For Purchase Catalog



## Classic Peak Tuxedo

Style 880



**TRADITIONAL FIT**  
A classic, fuller cut tuxedo.

**Size Scale:** A - see page 54;

expanded sizes available

**Men's coat sizes:** 34-74

**Boys' coat sizes:** 2-18

**850 pant sizes:** 18-71

**Features:**

- ▶ Satin peak lapel, center-vented, 31 1/2" length
- ▶ Shown with modern fit pants with a beaded stripe

**Fabric Content:**

100% Worsted Wool

**To order ensemble as shown:**

Coat	<b>880</b>
Modern Fit Pants	<b>850</b>
Shirt	<b>85W</b>
Tie	<b>BSAT</b>
Sash	<b>CUMB</b>
Jewelry	<b>BLACK</b>
Formal Shoes (upcharge)	<b>BDS</b>
Pocket Square (purchase only)	<b>PSWH</b>

**Black Pant Option:**

Modern Fit Pants **850**

## Classic Peak Fulldress Tuxedo Style 588



**TRADITIONAL FIT**  
A classic, fuller cut tuxedo.

**Size Scale:** D - see page 54

**Men's coat sizes: 34-60**

**Boys' coat sizes: 3-18**

**850 pant sizes: 18-71**

### Features:

- ▶ Six-button fulldress styling
- ▶ Satin peak lapel, center-vented tail, 42" length
- ▶ Shown with modern fit pants with a beaded stripe

### Fabric Content:

100% Tropical Worsted Wool

### To order ensemble as shown:

Coat	<b>588</b>
Modern Fit Pants	<b>850</b>
Shirt	<b>36W</b>
Tie	<b>BPIQ</b>
Vest	<b>VPIQ</b>
Jewelry	<b>PEARL</b>
Formal Shoes (upcharge)	<b>BDS</b>
Pocket Square (purchase only)	<b>PSWH</b>

### Black Pant Option:

Modern Fit Pants	<b>850</b>
------------------	------------



## MEASURING TECHNIQUES

### NO LOOSE MEASUREMENTS OR FINGERS UNDER THE MEASURING TAPE

Always record the customer's height & weight, as well as his fit preference (regular or tighter fit)



**CHEST**

- Lift arms
- Place tape around broadest part of chest
- Lower arms to side and relax
- Measure from side to ensure tape is level



**OVERARM**

- Arms relaxed by side
- Place tape around broadest part of chest and arms
- Measure from side to ensure tape is level



**NECK**

- Measure around neck where collar will button
- Do not place fingers under the tape
- Add 1" to measurement for neck size



**HIP**

- Remove items from pockets
- Stand to side and measure broadest part of hip and rear



**PANT WAIST**

- Measure where pants will be worn (1" under the navel is ideal)



**PANT WAIST - WITH STOMACH**

- Measure below the stomach if that's where the pants will be worn
- Pull tape snug for this measurement



**STOMACH**

- Measure widest part of customer's stomach
- Helps determine shirt and coat size on larger customers
- DO NOT record as the waist measurement

**SIZING TIPS**

**PANT SIZING**

- **Hip measurement** - 6 = smallest pant waist (Ex. 40" hip - 6" = 34" waist)

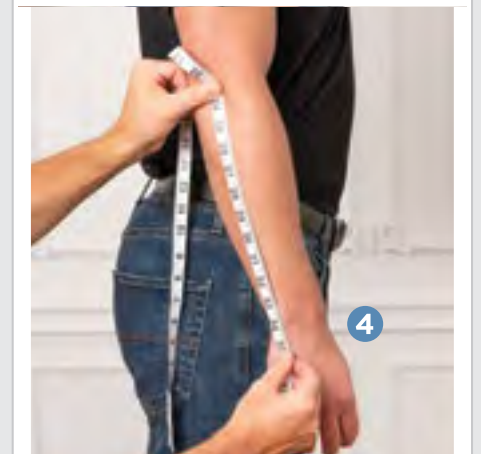
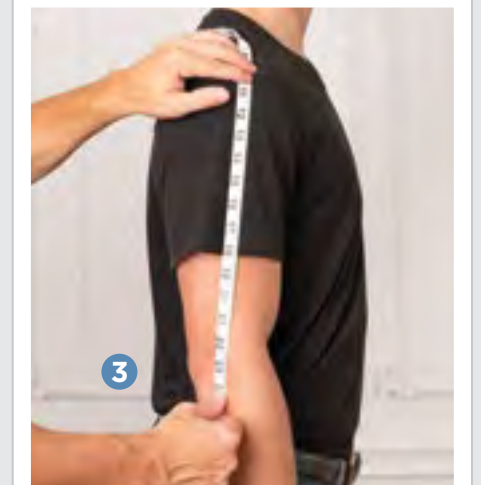
**COAT SIZING**

- **Slim Fit Coats**
  - Chest measurement + 1" - or - Overarm measurement - 8"
  - The LARGER number is the coat size
- **Modern Fit Coats**
  - Chest measurement - or - Overarm measurement - 9"
  - The LARGER number is the coat size



**OUTSEAM**

- Remove shoes and look straight ahead
- Measure from the back
- Start at top of waistband and measure to the floor
- Subtract 1" for a standard pant break



**SHIRT SLEEVE**

- 1 Measure from base of neck centered on spine
- 2 Measure over the top of shoulder
- 3 Measure to elbow
- 4 Measure to wrist bone and add 1"

# COAT SIZING GUIDE

COAT	CHEST	OVERARM	WAIST	HIP	INSEAM	OUTSEAM	NECK	SLEEVE	HEIGHT	WEIGHT
34S	32 - 34	41 - 43	26 - 28	32 - 34	< 30.5	< 40.5	14 - 15.5	32 - 33	< 5' 8"	95 - 115
35S	33 - 35	42 - 44	27 - 29	33 - 35	< 30.5	< 40.5	14 - 15.5	32 - 33	< 5' 8"	105 - 125
36S	34 - 36	43 - 45	27 - 30	33 - 36	< 30.5	< 40.5	14 - 15.5	32 - 33	< 5' 8"	115 - 135
37S	35 - 37	44 - 46	28 - 31	34 - 37	< 30.5	< 40.5	14.5 - 15.5	32 - 33	< 5' 8"	125 - 145
38S	36 - 38	45 - 47	29 - 32	35 - 38	< 30.5	< 40.5	14.5 - 15.5	32 - 33	< 5' 8"	135 - 155
39S	37 - 39	46 - 48	30 - 33	36 - 39	< 30.5	< 40.5	15 - 16.5	32 - 33	< 5' 8"	145 - 165
40S	38 - 40	47 - 49	30 - 34	36 - 40	< 30.5	< 40.5	15 - 16.5	32 - 33	< 5' 8"	150 - 170
41S	39 - 41	48 - 50	31 - 35	37 - 41	< 30.5	< 40.5	15.5 - 16.5	32 - 33	< 5' 8"	155 - 175
42S	40 - 42	49 - 51	32 - 36	38 - 42	< 30.5	< 40.5	15.5 - 16.5	32 - 33	< 5' 8"	160 - 180
43S	41 - 43	50 - 52	33 - 37	39 - 43	< 30.5	< 40.5	16 - 17.5	32 - 33	< 5' 8"	170 - 190
44S	42 - 44	51 - 53	34 - 39	40 - 45	< 30.5	< 40.5	16 - 17.5	32 - 33	< 5' 8"	180 - 200
46S	44 - 46	53 - 55	36 - 41	42 - 47	< 30.5	< 40.5	16 - 17.5	32 - 33	< 5' 8"	190 - 215
48S	46 - 48	55 - 57	38 - 44	44 - 50	< 30.5	< 40.5	17 - 18.5	32 - 33	< 5' 8"	200 - 230
50S	48 - 50	57 - 59	40 - 46	46 - 52	< 30.5	< 40.5	17 - 18.5	32 - 33	< 5' 8"	210 - 250
COAT	CHEST	OVERARM	WAIST	HIP	INSEAM	OUTSEAM	NECK	SLEEVE	HEIGHT	WEIGHT
34R	32 - 34	41 - 43	26 - 28	32 - 34	29 - 33	39 - 43	14 - 15.5	34 - 35	5' 8" - 6'	105 - 125
35R	33 - 35	42 - 44	27 - 29	33 - 35	29 - 33	39 - 43	14 - 15.5	34 - 35	5' 8" - 6'	115 - 135
36R	34 - 36	43 - 45	27 - 30	33 - 36	29 - 33	39 - 43	14 - 15.5	34 - 35	5' 8" - 6'	125 - 145
37R	35 - 37	44 - 46	28 - 31	34 - 37	29 - 33	39 - 43	14.5 - 15.5	34 - 35	5' 8" - 6'	130 - 150
38R	36 - 38	45 - 47	29 - 32	35 - 38	29 - 33	39 - 43	14.5 - 15.5	34 - 35	5' 8" - 6'	140 - 160
39R	37 - 39	46 - 48	30 - 33	36 - 39	29 - 33	39 - 43	15 - 16.5	34 - 35	5' 8" - 6'	150 - 170
40R	38 - 40	47 - 49	30 - 34	36 - 40	29 - 33	39 - 43	15 - 16.5	34 - 35	5' 8" - 6'	160 - 180
41R	39 - 41	48 - 50	31 - 35	37 - 41	29 - 33	39 - 43	15.5 - 16.5	34 - 35	5' 8" - 6'	170 - 190
42R	40 - 42	49 - 51	32 - 36	38 - 42	29 - 33	39 - 43	15.5 - 16.5	34 - 35	5' 8" - 6'	175 - 195
43R	41 - 43	50 - 52	33 - 37	39 - 43	29 - 33	39 - 43	16 - 17.5	34 - 35	5' 8" - 6'	185 - 205
44R	42 - 44	51 - 53	34 - 40	40 - 45	29 - 33	39 - 43	16 - 17.5	34 - 35	5' 8" - 6'	195 - 215
46R	44 - 46	53 - 55	36 - 42	42 - 47	29 - 33	39 - 43	16.5 - 17.5	34 - 35	5' 8" - 6'	205 - 225
48R	46 - 48	55 - 57	38 - 44	44 - 50	29 - 33	39 - 43	17 - 18.5	34 - 35	5' 8" - 6'	220 - 240
50R	48 - 50	57 - 59	40 - 47	46 - 53	29 - 33	39 - 43	17 - 18.5	34 - 35	5' 8" - 6'	240 - 260
52R	50 - 52	59 - 61	42 - 49	48 - 54	29 - 33	39 - 43	17 - 18.5	34 - 35	5' 8" - 6'	260 - 275
54R	52 - 54	61 - 63	44 - 51	50 - 56	29 - 33	39 - 43	18 - 19.5	34 - 35	5' 8" - 6'	275 - 290
56R	54 - 56	63 - 65	46 - 53	52 - 58	29 - 33	39 - 43	18 - 20.5	34 - 35	5' 8" - 6'	290 - 300
58R	56 - 58	65 - 67	48 - 55	54 - 60	29 - 33	39 - 43	18 - 20.5	34 - 35	5' 8" - 6'	300 - 310
60R	58 - 60	67 - 69	50 - 57	56 - 62	29 - 33	39 - 43	19 - 22.5	34 - 35	5' 8" - 6'	310 - 330
62R	60 - 62	69 - 71	52 - 59	58 - 64	29 - 33	39 - 43	20 - 22.5	34 - 35	5' 8" - 6'	320 - 340
64R	62 - 64	71 - 73	54 - 61	60 - 66	29 - 33	39 - 43	21 - 24	34 - 35	5' 8" - 6'	340 - 350
66R	64 - 66	73 - 75	56 - 63	62 - 68	29 - 33	39 - 43	23 - 26	34 - 35	5' 8" - 6'	350 - 370
COAT	CHEST	OVERARM	WAIST	HIP	INSEAM	OUTSEAM	NECK	SLEEVE	HEIGHT	WEIGHT
34L	32 - 34	41 - 43	26 - 28	32 - 34	33 - 35.5	43 - 45.5	14 - 15.5	36 - 37	6' - 6' 3"	115 - 135
35L	33 - 35	42 - 44	27 - 29	33 - 35	33 - 35.5	43 - 45.5	14.5 - 15.5	36 - 37	6' - 6' 3"	125 - 145
36L	34 - 36	43 - 45	27 - 30	33 - 36	33 - 35.5	43 - 45.5	14 - 15.5	36 - 37	6' - 6' 3"	135 - 155
37L	35 - 37	44 - 46	28 - 31	34 - 37	33 - 35.5	43 - 45.5	14.5 - 15.5	36 - 37	6' - 6' 3"	140 - 160
38L	36 - 38	45 - 47	29 - 32	35 - 38	33 - 35.5	43 - 45.5	14.5 - 15.5	36 - 37	6' - 6' 3"	150 - 175
39L	37 - 39	46 - 48	30 - 33	36 - 39	33 - 35.5	43 - 45.5	15 - 16.5	36 - 37	6' - 6' 3"	155 - 185
40L	38 - 40	47 - 49	30 - 34	36 - 40	33 - 35.5	43 - 45.5	15 - 16.5	36 - 37	6' - 6' 3"	160 - 185
41L	39 - 41	48 - 50	31 - 35	37 - 41	33 - 35.5	43 - 45.5	15.5 - 16.5	36 - 37	6' - 6' 3"	170 - 190
42L	40 - 42	49 - 51	32 - 36	38 - 42	33 - 35.5	43 - 45.5	15.5 - 16.5	36 - 37	6' - 6' 3"	175 - 200
43L	41 - 43	50 - 52	33 - 37	39 - 43	33 - 35.5	43 - 45.5	16 - 17.5	36 - 37	6' - 6' 3"	185 - 210
44L	42 - 44	51 - 53	34 - 40	40 - 45	33 - 35.5	43 - 45.5	16 - 17.5	36 - 37	6' - 6' 3"	200 - 225
46L	44 - 46	53 - 55	36 - 42	42 - 47	33 - 35.5	43 - 45.5	16.5 - 17.5	36 - 37	6' - 6' 3"	210 - 235
48L	46 - 48	55 - 57	38 - 44	44 - 50	33 - 35.5	43 - 45.5	17 - 18.5	36 - 37	6' - 6' 3"	220 - 245
50L	48 - 50	57 - 59	40 - 47	46 - 52	33 - 35.5	43 - 45.5	17 - 18.5	36 - 37	6' - 6' 3"	240 - 265
52L	50 - 52	59 - 61	42 - 49	48 - 54	33 - 35.5	43 - 45.5	17 - 18.5	36 - 37	6' - 6' 3"	250 - 275
54L	52 - 54	61 - 63	44 - 51	50 - 56	33 - 35.5	43 - 45.5	18 - 19.5	36 - 37	6' - 6' 3"	265 - 290
56L	54 - 56	63 - 65	46 - 53	52 - 58	33 - 35.5	43 - 45.5	18 - 20.5	36 - 37	6' - 6' 3"	280 - 305
58L	56 - 58	65 - 67	48 - 55	54 - 60	33 - 35.5	43 - 45.5	18 - 20.5	36 - 37	6' - 6' 3"	295 - 315
60L	58 - 60	67 - 69	50 - 57	56 - 62	33 - 35.5	43 - 45.5	19 - 22.5	36 - 37	6' - 6' 3"	305 - 330
62L	60 - 62	69 - 71	52 - 59	58 - 64	33 - 35.5	43 - 45.5	20 - 22.5	36 - 37	6' - 6' 3"	315 - 340
64L	62 - 64	71 - 73	54 - 61	60 - 66	33 - 35.5	43 - 45.5	21 - 24	36 - 37	6' - 6' 3"	325 - 350
66L	64 - 66	73 - 75	56 - 63	62 - 68	33 - 35.5	43 - 45.5	23 - 26	36 - 37	6' - 6' 3"	350 - 375
COAT	CHEST	OVERARM	WAIST	HIP	INSEAM	OUTSEAM	NECK	SLEEVE	HEIGHT	WEIGHT
38XL	36 - 38	45 - 47	28 - 32	34 - 38	> 35	> 44	15 - 16.5	38 - 39	> 6' 3"	155 - 180
39XL	37 - 39	46 - 48	30 - 33	36 - 39	> 35	> 44	15 - 16.5	38 - 39	> 6' 3"	160 - 185
40XL	38 - 40	47 - 49	30 - 34	36 - 40	> 35	> 44	15 - 16.5	38 - 39	> 6' 3"	165 - 190
42XL	40 - 42	49 - 51	32 - 36	38 - 42	> 35	> 44	15 - 16.5	38 - 39	> 6' 3"	180 - 205
44XL	42 - 44	51 - 53	34 - 40	40 - 46	> 35	> 44	16 - 17.5	38 - 39	> 6' 3"	200 - 230
46XL	44 - 46	53 - 55	36 - 42	42 - 48	> 35	> 44	16.5 - 17.5	38 - 39	> 6' 3"	215 - 240
48XL	46 - 48	55 - 57	38 - 44	44 - 50	> 35	> 44	17 - 18.5	38 - 39	> 6' 3"	230 - 270
50XL	48 - 50	57 - 59	40 - 46	46 - 52	> 35	> 44	17 - 18.5	38 - 39	> 6' 3"	240 - 290
52XL	50 - 52	59 - 61	42 - 48	48 - 54	> 35	> 44	17 - 18.5	38 - 39	> 6' 3"	250 - 300

SHORT

REGULAR

LONG

X-LONG

# ADDITIONAL SIZING GUIDES

BOYS' FORMALWEAR MEASUREMENT GUIDE							
Age / Size	Height	Chest	Waist	Inseam	Outseam	Sleeve	Shirt
2	36"	22.5"	17 - 18"	13"	20"	18"	10-10.5" x 20"
3	38"	23"	19 - 20"	15"	22"	19"	10-10.5" x 20"
4	42"	24"	20 - 21"	15.5"	23"	20"	10-10.5" x 20"
5	45"	25"	21 - 22"	16.5"	24"	21"	11-11.5" x 22"
6	48"	25.5"	22 - 23"	18"	25.5"	22"	11-11.5" x 22"
7	50"	26"	23" - 24"	19.5"	27"	23"	11-11.5" x 24"
8	52"	26.5"	24"	21"	29"	24"	11-11.5" x 24"
9	54"	27.5"	24 - 25"	22.5"	31"	25"	12-12.5" x 26"
10	55"	28"	25"	24.5"	33"	26"	12-12.5" x 26"
11	57"	28.5"	25 - 26"	25"	33.5"	27"	12-12.5" x 28"
12	59"	29.5"	26"	26"	35"	28"	12-12.5" x 28"
13	60"	30.5"	26 - 27"	26.5"	35.5"	29"	13-13.5" x 30"
14	62"	31"	26 - 27"	27.5"	36.5"	30"	13-13.5" x 30"
15	63"	31.5"	27 - 28"	28.5"	38"	31"	13-13.5" x 32"
16	64"	32.5"	27 - 28"	29.5"	39"	31"	13-13.5" x 32"
17	65"	33.5"	28 - 29"	30"	39.5"	32"	13-13.5" x 32"
18	67"	34"	28 - 29"	30.5"	40.5"	32"	14-14.5" x 32"

BOYS' HUSKY SIZE GUIDE			
Age / Size	Height	Chest	Waist
8	51"	27.5"	26"
10	54"	28.5"	27"
12	58"	30.5"	28"
14	61"	32"	30"
16	63"	34"	32"

Note: Boys' Husky size coats are normally 1" shorter in the sleeves and 1/2" shorter in the body than a standard boy's size tuxedo jacket.

ADJUSTABLE PANT WAIST RANGE	
27 - 28 - 29	51 - 52 - 53
30 - 31 - 32	54 - 55 - 56
33 - 34 - 35	57 - 58 - 59
36 - 37 - 38	60 - 61 - 62
39 - 40 - 41	63 - 64 - 65
42 - 43 - 44	66 - 67 - 68
45 - 46 - 47	69 - 70 - 71
48 - 49 - 50	

REVERSIBLE BELT SIZING	
Size	Waist
X-Small	21 - 24
Small	25 - 28
Medium	29 - 32
Large	33 - 36
X-Large	37 - 40
2X-Large	41 - 44
3X-Large	45 - 48

ITALIAN LEATHER BELT SIZING	
Size	Waist
Small	27 - 30
Medium	31 - 34
Large	35 - 38
X-Large	39 - 42
2X-Large	43 - 46
3X-Large	47 - 50
4X-Large	51 - 54

NOVELTY SUSPENDER SIZING CHART	
Coat Size	Suspender Size
2B - 7B	Boys' (B)
8B - 46X	Men's (M)
47L - 60X	Long (L)

BOYS' SHIRT SIZE GUIDE			
Shirt Size	Neck	Max. Sleeve	Max. Mid-Section*
X-Small	10" - 10.5"	20"	23"
Small	1		

# SIZE SCALE REFERENCE GUIDE

**Coat Sizing Scales:** Use these sizing scales as guides to see which styles are available in a particular size.

SCALE A	
<b>MEN'S</b>	
Regular	34-74
Portly Regular	40-60
Short	34-60
Long	36-74
Extra Long	38-66
<b>BOYS'</b>	
Regular	2-18
Husky	8-18
Coats available in this scale:	
820 page 47	880 page 49

SCALE A2					
<b>MEN'S</b>					
Regular	34-74				
Short	34-60				
Long	34-74				
Extra Long	38-66				
<b>BOYS'</b>					
Regular	3-18				
Husky	8-16				
Coats available in this scale:					
222 page 31	262 page 29	272 page 17	302 page 20	311 page 18	350 page 21
421 page 16	921 page 15				

SCALE B					
<b>MEN'S</b>					
Regular	34-66				
Short	34-56				
Long	34-66				
Extra Long	38-56				
<b>BOYS'</b>					
Regular	3-18				
Husky	8-16				
Coats available in this scale:					
202 page 28	221 page 33	372 page 23	392 page 25	601 page 45	712 page 43
981 page 19	990 page 27				

SCALE B2			
<b>MEN'S</b>			
Regular	34-66		
Short	34-56		
Long	36-66		
Extra Long	38-56		
<b>BOYS'</b>			
Regular	3-18		
Husky	8-16		
Coats available in this scale:			
252 page 39	602 page 46	701 page 48	822 page 41

SCALE D			
<b>MEN'S</b>			
Regular	34-60		
Short	34-50		
Long	36-60		
Extra Long	38-50		
<b>BOYS'</b>			
Regular	3-18		
Husky	N/A		
Coats available in this scale:			
201 page 30	211 page 32	588 page 50	751 page 44

**Note:** In size scale D, coat style 588 is available up to 68L and 68R. (All other sizing in size scale D applies.)

SCALE E		
<b>MEN'S</b>		
Regular	34-44	
Short	34-44	
Long	34-44	
Extra Long	38-44	
<b>BOYS'</b>		
Regular	N/A	
Husky	N/A	
Coats available in this scale:		
371 page 22	391 page 24	991 page 26

**Note:** 371 and 391 pants available in sizes 27-44. 991 pant available in sizes 18-59.

SCALE F		
<b>MEN'S</b>		
Regular	34-50	
Short	34-50	
Long	34-50	
Extra Long	38-50	
<b>BOYS'</b>		
Regular	14-18	
Husky	N/A	
Coats available in this scale:		
122 page 36	132 page 37	172 page 38

**Note:** Even sizes only.

SCALE G	
<b>MEN'S</b>	
Regular	34-66
Short	34-56
Long	34-66
Extra Long	38-56
<b>BOYS'</b>	
Regular	3-18
Husky	N/A
Coats available in this scale:	
182 page 35	192 page 34

**Note:** Even sizes only.

SCALE H	
<b>MEN'S</b>	
Regular	34-56
Short	34-56
Long	36-56
Extra Long	38-56
<b>BOYS'</b>	
Regular	14-18
Husky	N/A
Coats available in this scale:	
802 page 42	852 page 40

# PANT FITS

Every detail of your ensemble is important, including your pants. Use this guide to help you achieve your preferred look.



Modern Fit Pants		
Pant Styles	Features	Waist Sizing
252	+	18-65
372	~	18-65
392	~	18-65
650	*	18-65
750	*	18-65
850	*	18-71
990	•	18-65

Slim Fit Pants		
Pant Styles	Features	Waist Sizing
202	~	18-65
211	+	18-59
221	+	18-65
222	#	18-71
251	+	27-44
262	~	18-71
272	~	18-71
302	~	18-71
311	~	18-71
350	~	18-71
371	~	27-44
391	~	27-44
921	~	18-71
991	+	18-59

Euro Slim Fit Pants		
Pant Styles	Features	Waist Sizing
N11P	>	26-44 (even sizes)
N17P	>	26-44 (even sizes)

- \* pant styles with a beaded stripe
- + pant styles with no stripe
- pant styles with a faille piped leg stripe
- ~ pant styles with no stripe; includes buttons for suspenders and belt loops
- # pant styles with no stripe; includes belt loops
- > pant styles with an exact waist and belt loops - for purchase only

**Please Note:** Cowboy boots fit best with modern fit pants. However, they can be worn with slim fit pants when accompanied by boot straps.

# PRICING INFORMATION

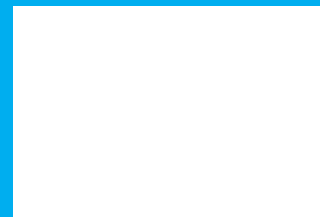
Find Tuxedos, Suits and Formal Accessories to match any budget



## DIAMOND COLLECTION | Pages 15-38

Diamond Collection ensembles include:

Any pant, any basic shirt with nickel-plated jewelry, any tie and any vest or cummerbund.



## PLATINUM COLLECTION | Pages 39-46

Platinum Collection ensembles include:

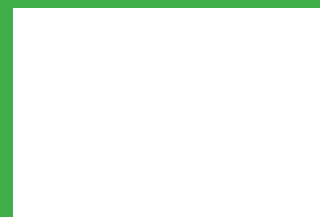
Any pant, any basic shirt with nickel-plated jewelry, any tie and any vest or cummerbund.



## GOLD COLLECTION | Pages 47-48

Gold Collection ensembles include:

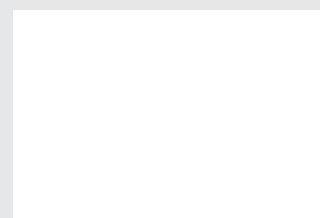
Any pant, any basic shirt with nickel-plated jewelry, any tie and any vest or cummerbund.



## BUDGET COLLECTION | Pages 49-50

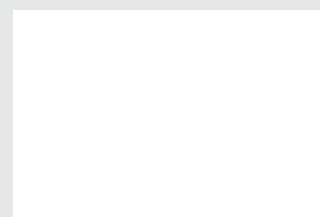
Budget Collection ensembles include:

Any pant, any basic shirt with nickel-plated jewelry, any tie and any vest or cummerbund.



## POCKET SQUARES

An essential component of every ensemble, a colorful pocket square is available to match nearly every fullback vest or tie offered. Don't forget to add one to your look!



## ACCIDENTAL DAMAGE WAIVER (ADW) - added to each rental

The ADW relieves you from additional charges resulting from accidental damages when they can't be repaired through normal dry cleaning or minor tailoring. The ADW does not cover malicious damages, lost or stolen items, or any late return charges.

**All Tuxedo and Suit Rentals MUST be returned the next business day to avoid additional rental charges!**



FOR RENTAL